

## Maternity Routine Enquiry

<b>Document Reference No:</b>	MAT 081	
<b>Version No:</b>	1	
<b>Issue Date:</b>	January 2023	
<b>Review Date:</b>	January 2026	
<b>Author/s:</b>	Lead Midwife Safeguarding	
<b>Document Owner:</b>	Women & Children's Directorate	
<b>Accountable Executive:</b>	Executive Director of Nursing & Midwifery	
<b>Approved By:</b>	Executive Director of Nursing & Midwifery	
<b>Approval Date:</b>	24 <sup>th</sup> January 2023	
<b>Document Type:</b>	Standard Operating Procedure (SOP)	Clinical
<b>Scope:</b>	PTHB (Powys Teaching Health Board)	

The latest approved version of this document is online.  
If the review date has passed, please contact the Author for advice.

Powys Teaching Health Board is the operational name of Powys Teaching Local Health Board  
Bwrdd Iechyd Addysgu Powys yw enw gweithredol Bwrdd Iechyd Lleol Addysgu Powys



<b>Item No.</b>	<b>Contents</b>	<b>Page</b>
1	Policy Statement/Introduction/Acknowledgment	6
2	Aims/Objectives	6
3	Definitions	6
4	Responsibilities	7
5	Training/Development	7
6	Audit schedule	7
7	Change control/Review	8
8	References and Useful Links	9
<b>App. No.</b>	<b>Appendices</b>	<b>Page</b>
1	Flow Chart for Routine Enquiry	10
2	Audit Tool	11
3	All Wales Routine Enquiry Standards	12

## ENGAGEMENT & CONSULTATION

### Key Individuals/Groups Involved in Developing this Document

Role / Designation
Lead Midwife Safeguarding

### Circulated to the following for Consultation

Date	Role / Designation
13.01.2023	Women & Children's Policy and Procedures Oversight Group
09.01.2023	Maternity Policies and Procedures Group
27.11.2022	Safeguarding Team
24.11.2022	PTHB Midwifery Team

### Groups Approved at

Date	Group
09.01.2023	Maternity Guidelines Group
16.01.2023	Women and Children's policies and procedures group
24.01.2023	Executive Director of Nursing & Midwifery

### Evidence Base

**Please list any National Guidelines, Legislation or Health and Care Standards relating to this subject area?**

- All Wales All Wales Minimum Standards Routine Enquiry into Domestic Abuse, Pregnancy and Early Years. All Wales Midwifery & Health Visitors Domestic Abuse Networking Group 2021
- Anti-Social Behavior, Crime and Policing Act 2014
- Delivery Of Ask and Act: The Role of The Frontline Practitioner. Nov 2017 Welsh Government
- Domestic Violence and Abuse: Multi- Agency Working, Public Health Guideline, NICE Feb 2014 Domestic Violence and Abuse, Quality Standard, NICE Feb
- Multi- Agency Statutory Guidance for The Conduct of Domestic Homicide Reviews, December 2016
- National Strategy on Violence Against Women, Domestic Abuse and Sexual Violence 2016-2021
- Serious Crime Act 2015
- Social Services and Wellbeing (Wales) Act 2014
- The National Training Framework on Violence Against Women, Domestic Abuse and Sexual Violence: Statutory Guidance Under Section 15 Of The Violence Against Women, Domestic Abuse And Sexual Violence Act 2015 And Section 60 Of The Government Of Wales Act 2006
- The United Nations Declaration on The Elimination Of Violence Against Women 1993
- Violence Against Women, Domestic Abuse and Sexual Violence (Wales) Act 2015
- Wales Safeguarding Procedures (2019)

- Future Generations Act
- Welsh Language Measure

## IMPACT ASSESSMENTS

### Equality Impact Assessment Summary

	No impact	Adverse	Differential	Positive	Statement
					Please remember policy documents are published to both the <b>intranet</b> and <b>internet</b> .
<b>Age</b>	x				The version on the internet must be translated to Welsh.
<b>Disability</b>	x				
<b>Gender reassignment</b>	x				
<b>Pregnancy and maternity</b>				x	
<b>Race</b>	x				
<b>Religion/ Belief</b>	x				
<b>Sex</b>	X				
<b>Sexual Orientation</b>	X				
<b>Marriage and civil partnership</b>	X				
<b>Welsh Language</b>	X				
<b>Human Rights</b>	X				
Risk Assessment Summary					
<b>Have you identified any risks arising from the implementation of this policy / procedure / written control document?</b>					
No					
<b>Have you identified any Information Governance issues arising from the implementation of this policy / procedure / written control document?</b>					
No					
<b>Have you identified any training and / or resource implications as a result of implementing this?</b>					
L3 passports and Ask and Act are Mandatory for all Midwives in Powys					

## **Routine Enquiry SOP for Maternity Care in Powys**

### **1. Policy Statement / Introduction**

*"It is estimated that around 3 million women across the UK experience rape, domestic violence, forced marriage, stalking, sexual exploitation, trafficking and other forms of violence every year. This is the equivalent to the population of Wales."* Report of the Secretary General, 2006

Violence against women, domestic abuse and sexual violence is a large scale, pervasive problem. Domestic abuse is the exercise of control by one person over another within an intimate or close family relationship; the abuse can be sexual, physical, financial, emotional, or psychological. The abuse can happen in the home or elsewhere. (Welsh Women's Aid). Statistics show that 1 in 4 women will suffer domestic abuse in their lifetime and we know 40-60% of women suffering with DA state they were abused during pregnancy and over a third of women state it got worse or started during a pregnancy. (Best beginnings, 2022). Children and young people living with violence against women, domestic abuse and sexual violence are exposed to a significant risk of harm that can have an adverse effect upon their physical and emotional wellbeing.

### **2. Objective/Aims**

For all PTHB midwives to be clear about their roles and responsibilities around the routine enquiry throughout pregnancy and the postnatal period. This SOP outlines the correct method and place of documentation of re:1, the introduction of a robust audit pathway and links to the PTHB VAWDSV (SGP 039) for the management and support of women who are subject to DA during pregnancy/ Postnatal period.

### **3. Definitions**

RE:1 – Routine Enquiry

DA:1 – Form in maternity tracer to record positive re:1 or when re:1 has not been completed

DHR –Domestic Homicide Review

DACC – Domestic Abuse Conference Call

DASHRIC - Domestic Abuse, Stalking, Harassment and Honour Based Violence Risk Identification Checklist

DVPN – Domestic Violence Protection Notice

DVPO - Domestic Violence Protection Order

MARAC – Multi Agency Risk Assessment Conference

PTHB – Powys Teaching Health Board

VAWDASV – Violence against Women, Domestic Abuse and Sexual Violence

## 4. Responsibilities

### Midwife Leads:

- To ensure this document is available and circulated within midwifery teams.
- To ensure staff are using correct documentation in handheld records
- To ensure staff are up to date with L3 passport and Ask and Act
- Support midwives with positive routine enquiry disclosures

### Midwives:

- Routinely ask all women RE:1 at EVERY appointment when they are alone/ it is safe to do so
- Routine enquiry should be asked in the woman's first, preferred language. It is appropriate to use a 'language line' translator to ask about domestic violence, if the woman is unaccompanied at the appointment.
- Document when and why re:1 cannot be completed, and ensure this is handed over to HV colleagues if unable to ask in pregnancy
- Targeted enquiry must be completed where a DIN has been received within 7 days
- Act appropriately when there is a positive response to re:1 by completing DASH RIC and offering support
- Positive re:1 must be documented on the DA:1 form within the tracer and a copy of the DASH RIC must be printed and attached.
- Refer into DACC/ MARAC if appropriate – Please follow VAWDASV PTHB policy for further details (SGP 093 VAWDASV Policy)
- Complete a child at risk report if necessary
- On WPAS there will be a warning when accessing women's records if they have been discussed at MARAC previously (this is stored under key notes). This should result in a targeted enquiry being completed at the next planned midwifery appointment.

### Lead Midwife for Safeguarding:

- Review SOP when updates on national level are released
- Ensure SOP and guidance is disseminated out to Midwives
- Complete 3 monthly Audits of 16 records as per Appendix 2
- Support for staff when positive routine enquiry disclosures are made

## 6. Training & development

All relevant professionals to ensure awareness of this document and are providing evidence-based, up-to-date information.

L3 passports and Ask and Act are Mandatory for all Midwives in Powys

## 7. Audit schedule

### Aim

To provide assurance MW are compliant with the current guidance around asking women the Routine Enquiry (RE) for domestic abuse at every appropriate MW contact

**Proposal**

1. To review 16 sets of records from birth to 8 weeks post birth. 2 sets of records will be pulled at random from each birth centre in Powys.
2. Review of records to be completed by the Lead Midwife for Safeguarding
3. Findings from the audit will be gathered and formulated into a report

**Timescale**

First Audit planned for March 2023, then will be quarterly thereafter to feed into the strategic safeguarding quarterly meeting.

**8. Change control /review**

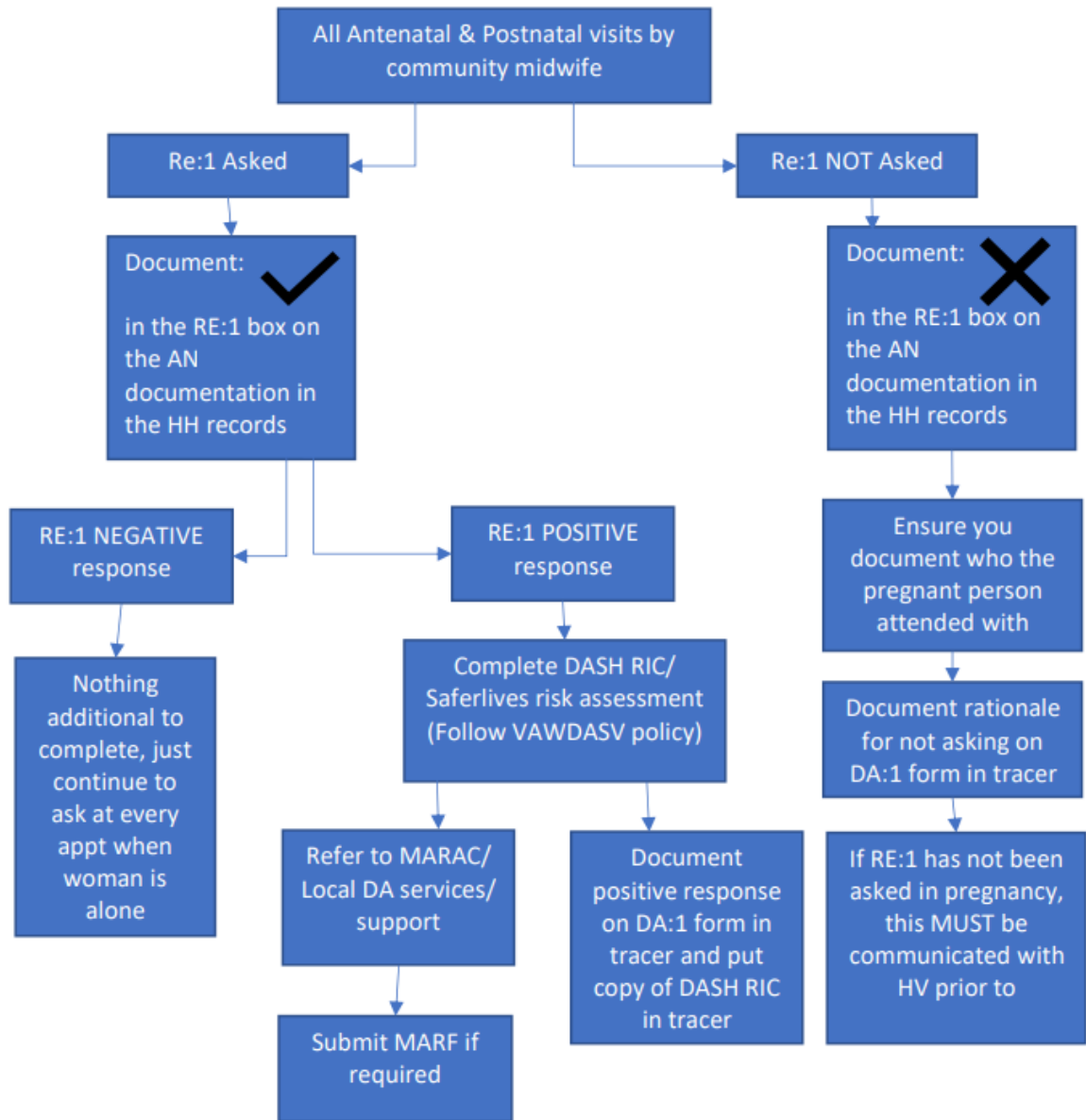
This document will be reviewed every three years or earlier should audit results or changes to legislation / practice within PTHB indicate otherwise.

## 9. References and useful links

- PTHB/ SGP 039 VAWDASV policy- violence against women, domestic abuse and sexual violence policy 2022
- All Wales Minimum Standards Routine Enquiry into Domestic Abuse, Pregnancy and Early Years 2021
- Anti-Social Behaviour, Crime and Policing Act 2014
- London HMSO Welsh Government (2017)
- Delivery of Ask and Act: The role of the frontline practitioner Home Office (2016)
- Multi- Agency Statutory Guidance for the Conduct of Domestic Abuse Homicide Reviews London HMSO
- NICE (2014) Domestic violence and abuse: multi- agency Working, Public health guideline.
- NICE (2016) Domestic Violence and Abuse, Quality Standard Older People's Commissioner for Wales, Information and guidance on domestic abuse:
- HR070 Violence against Women, Domestic Abuse and Sexual Violence Workplace Policy Public Health Wales (2015)
- Welsh Adverse Childhood Experiences (ACE) study Public Health Wales NHS Trust Wales
- Serious Crime Act 2015
- London HMSO Social Services and Wellbeing (Wales) Act 2014
- The National Training Framework on violence against women, domestic abuse and sexual violence: Statutory guidance under section 15 of the Violence against Women, Domestic Abuse and Sexual Violence Act 2015 and section 60 of the Government of Wales Act 2006
- The United Nations Declaration on the Elimination of Violence against Women 1993 Welsh Government (2017)
- Delivery of Ask and Act: The role of the frontline practitioner.
- Welsh Government (2016) National Strategy on Violence against Women, Domestic Abuse and Sexual Violence 2016-2021
- Wales Safeguarding Procedures 2019

## Appendix 1

### Flow Chart for Routine Enquiry



**Appendix 2**

**Audit Tool**

**Report to**

PTHB Safeguarding Operational Group and Womens & Childrens Management Meeting

**Aim**

To provide assurance MW are compliant with the current guidance around asking women the Routine Enquiry (RE) for domestic abuse at every appropriate MW contact

**Proposal**

1. To review 16 sets of records from birth to 8 weeks post birth. 2 sets of records will be pulled at random from each birth centre in Powys.
2. Review of records to be completed by the Lead Midwife for Safeguarding
3. Findings from the audit will be gathered on the table below
4. The safeguarding administrator will merge the findings when they are complete, which will compile the data for the report

**Timescale**

First Audit planned for March 2023, then will be quarterly thereafter to feed into the Strategic Safeguarding Quarterly Meeting.

<b>Audit Tool</b>						
<b>Quarter/ Month:</b>					<b>Date Completed:</b>	
<b>Birth Centre</b>	<b>P Number</b>	<b>Number of AN appts with community MW</b>	<b>Number of appts attended alone</b>	<b>Number of times RE:1 was asked</b>	<b>Percentage of alone appts asked re:1</b>	<b>+VE answer to re:1/ DASH RIC completed</b>
Welshpool						
Welshpool						
Newtown						
Newtown						
Llanidloes						
Llanidloes						
Machynlleth						
Machynlleth						
Llandrindod						
Llandrindod						
Knighton						
Knighton						
Brecon						
Brecon						
Ystragynlais						
Ystragynlais						

## Appendix 3

### **All Wales Minimum Standards Routine Enquiry into Domestic Abuse, Pregnancy and Early Years**

#### **Standard 1**

All health professionals must recognise the duty to respect the woman's confidentiality but must be aware of its limitations in the wider public interest.

#### **Standard 2**

All women will be routinely asked about domestic abuse at every opportunity during Pregnancy and Early Years, within Maternity, Neonatal Care and Health Visiting Services. If women are unable to be asked this then there should be a clear documented rationale.

#### **Standard 3**

Women who disclose will be given appropriate support and information. Women will be offered referral to appropriate specialist services.

#### **Standard 4**

All discussions around the Routine Enquiry question and/or disclosure of domestic abuse will be recorded clearly and contemporaneously.

#### **Standard 5**

Undertake a risk assessment for the woman, unborn baby, and/or any other children in the household. Staff must consider the safety of the woman, themselves and others within the location/ environment including health settings and use appropriate risk assessment tools.

#### **Standard 6**

Where actual or the likelihood of harm is identified, a child at risk report (under the Wales Safeguarding Procedures 2019) must be made. The welfare of any child is paramount including the unborn child. Also consider the implications for the pregnant teenager

#### **Standard 7**

To ensure women, staff and practitioners are equipped with accurate and appropriate advice to stay safe.

#### **Standard 8**

Provide woman with accurate information i.e. resources, help and agencies available. Ensure multi-agency working.

#### **Standard 9**

To provide support to staff who are dealing with domestic abuse issues.

#### **Standard 10**

Staff will be confident and competent to deal with issues involving domestic abuse. Staff should be aware of basic legislation to help and reassure the woman.