

Standard Operating Procedure

Midwife – Led Influenza Immunisations

Document Reference No:	PTHB / MAT 067	
Version No:	2	
Issue Date:	Dec 2022	
Review Date:	Dec 2025	
Author:	Consultant Midwife	
Document Owner:	Head of Midwifery and Sexual Services	
Accountable Executive:	Director of Nursing	
Approved By:	Women and Children’s Policies and Procedures Group	
Approval Date:	02/12/2022	
Document Type:	Standard Operating Procedure	Clinical
Scope:	PTHB Maternity Service	

The latest approved version of this document is online.
If the review date has passed please contact the Author for advice.

Table of Contents

Table of Contents	2
Version Control.....	3
Engagement & Consultation	3
Circulated to the following for Consultation	3
Evidence Base	3
Impact Assessments	4
1 Introduction.....	5
2 Objective.....	5
3 Definitions (Mandatory Heading).....	6
4 Responsibilities	6
4.1 Head of Midwifery and Sexual health.	6
4.2 Midwives.....	6
4.3 Maternity Support workers (clinical and non-clinical)	7
4.4 Accountability	7
5. Procedure for ordering, receiving and storing vaccines.....	8
6. Inviting pregnant women	10
7. Process for Offering Vaccine.....	11
8 Consent Procedure	12
9. Administration of Vaccination Procedure	13
10 Monitoring compliance and Audit	13
10.1 Reporting via Welsh Patient Administration System (WPAS):	13
10.2 Evaluation / Audit Framework.....	14
11. Review and Change Control	15
12. References / Bibliography.....	15
Appendix A.....	16
Flu Order Form	16
Appendix B	17
Order log	17
Appendix C	18
Letter for women.....	18
Appendix D.....	20
Consent Form.....	20
Appendix E	23
WPAS Details	23

Version Control

Version	Summary of Changes/Amendments	Issue Date
1	Initial Issue	Sept 2019
2	Full review. Vaccine procurement details updated.	Dec 2022

Engagement & Consultation

Key Individuals/Groups Involved in Developing this Document

Role / Designation
Consultant Midwife
Clinical Supervisor for Midwives
Band 6 Midwife

Circulated to the following for Consultation

Date	Role / Designation
25/10/2022	Powys Leadership and Management Team
25/10/2022	Powys midwives
25/10/2022	Immunisation Coordinator
25/10/2022	Powys Public Health Team
25/10/2022	Members of the W&C policies and procedures group
25/10/2022	Medicines Management

Groups approved at

Date	Group
08/11/2022	Maternity Guidelines Group
02/12/2022	Women & Children's policies and procedures group

Evidence Base

Please list any National Guidelines, Legislation or Health and Care Standards relating to this subject area?

Green Book – Chapter 19 – influenza
Flu Immunisation Training Recommendations for 2022/23 in Wales

Impact Assessments

Equality Impact Assessment Summary					
	No impact	Adverse	Differential	Positive	Statement
					Please remember policy documents are published to both the intranet and internet .
Age	X				The version on the internet must be translated to Welsh.
Disability	X				
Gender reassignment	X				
Pregnancy and maternity				X	
Race	X				
Religion/ Belief	X				
Sex	X				
Sexual Orientation	X				
Marriage and civil partnership	X				
Welsh Language	X				
Human Rights	X				
Risk Assessment Summary					
<p>Have you identified any risks arising from the implementation of this policy / procedure / written control document?</p> <p>No risks identified.</p>					
<p>Have you identified any Information Governance issues arising from the implementation of this policy / procedure / written control document?</p> <p>No risks identified</p>					
<p>Have you identified any training and / or resource implications as a result of implementing this?</p> <p>Midwives will need to have immunisation training to work under this SOP.</p>					

1 Introduction

This standard operating procedure applies to all midwives, maternity support workers and maternity administrators employed by Powys Teaching Health Board (PTHB) who are involved in the ordering, storage and administration of influenza vaccinations to pregnant women and staff

This is to ensure that there is a safe and accurate process for midwife-led influenza immunisation.

This procedure should be read in conjunction with:

- Green Book, Chapter 19: Influenza.
- Public Health Wales. 'Immunisation and Vaccines'. Available at: [Immunisation and Vaccines - Public Health Wales \(nhs.wales\)](https://www.nhs.uk/public-health/wales/) Accessed: 24/10/2022
- PTHB/CDP007 Management of Anaphylaxis Procedure.
- PTHB/MMP001 – Medicines Policy
- PTHB/OHP002 Needlestick & Body Fluids Contamination Injuries Policy.
- MMP 010 Safe and secure management of refrigerated medicines and vaccines

2 Objective

- To provide a standardised approach on the actions required to deliver flu vaccination in the maternity service.
- To promote a consistent and evidence-based approach to maternity immunisation.
- To ensure safe and effective administration of immunisation during clinic sessions and at routine antenatal appointments.
- To appropriately provide information and administer vaccination to women and staff
- To ensure good communication with Primary Care
- To state the process for inviting pregnant women
- To state the procedure for ordering, receiving, storing and maintaining the cold chain, when it is necessary to transport vaccine
- To provide suggested template for flu vaccination clinics
- To state consent procedures
- To state reporting and monitoring procedures

3 Definitions (Mandatory Heading)

- **MSW** – Maternity Support Worker
- **PGD** – Patient group directive
- **PTHB** – Powys Teaching Health Board
- **WPAS** – Welsh Patient Administration System

4 Responsibilities

There is an expectation that, as PTHB employees, all maternity service staff will ensure they receive vaccination against seasonal flu via the maternity service peer vaccinators, the occupational health department, immunisation coordinator or (if in an at-risk group) their own GP.

4.1 Head of Midwifery and Sexual health.

The Head of midwifery must:

- Ensure that robust procedures are in place in order that PTHB can discharge its organisational responsibilities in the provision of safe and effective vaccination and immunisation administration to the Powys population of pregnant women.
- Ensure the overall implementation of the SOP
- Ensure all staff read and understand this procedure
- Support allocation of resources to ensure compliance with this procedure

4.2 Midwives

To work within the SOP guidance

- Ensure scrutiny of the consent form and clarifying any issues.
- Documenting, signing and dating same on the consent form.
- Ensuring all necessary documentation is completed and security maintained as appropriate.
- Ensuring all incidents (e.g. Anaphylactic shock and breaches in the cold chain) are reported following the PTHB Datix incident reporting procedures.
- Completing or supporting the completion of Yellow Cards for any unexpected adverse reactions which are observed or reported.
- Maintain level of competence to be able to administer influenza immunisations by completing a self-assessment on an annual basis and escalating any concerns relating to competence to their line manager and the immunisation coordinator.
- Midwives will ensure the current PGD is signed prior to each flu season.

Midwives must have completed:-

- A vaccination/immunisation PTHB recognised training day.
- Attended an annual basic life support training.

	<ul style="list-style-type: none">• Complete Flu one/two as recommended by the Health Board annually.• Complete the RCN self-assessment on an annual basis for administration of vaccines• Complete anaphylaxis e-learning on an annual basis• Complete cold chain / vaccine storage training on an annual basis• Read the competency and self-assessment document within the Flu Immunisation Training Recommendations for 2022/23 in Wales https://phw.nhs.wales/topics/immunisation-and-vaccines/vaccine-resources-for-health-and-social-care-professionals/immunisation-training-resources-and-events/flu-immunisation-training/
	<p>4.3 Maternity Support workers (clinical and non-clinical)</p> <ul style="list-style-type: none">• To work within this SOP to support midwives at clinics and send out flu letters to all pregnant women at the beginning of the flu season.• To complete cold chain training on annual basis to support receipt of vaccines in the absence of a midwife.• To assist with any requests for audit of uptake requested by Flu coordinators.
	<p>4.4 Accountability</p> <p>Clinical practice is underpinned by the principle that each practitioner remains accountable for their own practice and any actions.</p> <p>This procedure does not replace the requirement of all staff in ensuring that they are appropriately trained and competent, and that practice is in line with current PTHB policies, procedures and protocols.</p>

5. Procedure for ordering, receiving and storing vaccines

As part of daily drug checking, the midwife will check the number of flu vaccines stored in the fridge.

If stock is low (<10 vaccines left) then the midwife will order further vaccines. Midwife will check to ensure there are not already vaccines on order.

Orders need to be placed a week in advance and will only be transported on a Wednesday, Thursday and Friday each week.

To order the Flu Vaccine you need to complete the form in appendix A and email the completed form to Nikki.mathers@wales.nhs.uk also CC Eleri-wyn.davies2@wales.nhs.uk to the order.

The midwife will use the associated ordering/receiving template in the team 'flu file' to record ordering and receipt of vaccines (Appendix B). When completing the form stipulate whether the vaccines are for service users or peer vaccination.

Orders to be placed based on predicted number of vaccines needed for the week up to a **maximum of 40** at a time.

Fridges should not be more than 50% full overall. Storage of oxytocics and associated quantities must be considered.

Communication in planning ordering and receipt is paramount to ensure there is no vaccine wastage.

Orders will be delivered in cold chain boxes. **Staffing will need to be planned to ensure a midwife will be available to receive the vaccines.** When there is not a midwife available due to the midwife being called away in an emergency situation, arrangements will need to be made (by the midwife expecting to receive the vaccines) for a midwife to be available to receive the vaccines as soon as possible and medicines management/pharmacy advice will be sought to ascertain whether the vaccines can be used. This can be delegated to MSW, if they have completed the relevant cold chain training.

In Newtown and Llandrindod Wells, receipt can be planned via the DAU.

On delivery of the vaccines, check the order against the medicines management delivery note and sign the three copies to confirm that vaccine quantity received is correct and undamaged (also that the correct vaccine has been received i.e., pregnant women – vaccine for this age group – QIVc). Keep one delivery note for your records. Hand the remaining two delivery notes back to the delivery driver. Ensure that the date and time stipulated on the address label of the vaccine porter container has not reached its expiry time. This will be eight hours post packing into the container. The vaccines should be unpacked and

transferred to the fridge immediately on receipt. If this has not occurred, contact the Pharmacy team for advice. Complete ordering/receiving template and put the vaccines in the fridge. Where there is a discrepancy in the number of vaccines received or any damaged stock this must be discussed with the medicines management team.

The medicines policy (MMP001) must be followed at all times adhering to fridge temperature checking and cold chain principles. Where there are excursions in the fridge temperatures these must be managed in line with the MMP 010 Safe and secure management of refrigerated medicines and vaccines.

Daily fridge temperature checks will be completed in line with Medicines Management policy 010 safe and secure management of refrigerated medicines and vaccines. Should excursions occur, data will be downloaded via data loggers or SD cards to allow accurate identification of the length of time the fridge was out of range. This will allow accurate advice to be given from the medicine's management teams.

Procedure for reporting fridge excursion to MMT: Datix the incident, complete the fridge temperature excursion form fully and send to MMT Info.MedicinesManagement.Powys@wales.nhs.uk

6. Inviting pregnant women

A letter (Appendix C) will be sent to all pregnant women receiving care by Powys Midwives in September each year.

The named midwife will be responsible for inviting all women on their caseload.

Letters will then be added to all booking packs from September to ensure all pregnant women registering for care receive the letter as soon as possible.

Midwives will record on the tracer record when the letter has been sent.

Bumptalk maternity service user social media platform will regularly feature information relating to accessing the flu vaccine.

Liaison with the Communications team will enable further promotion of the phased implementation through the wider flu campaign, highlighting the service and through the use of floor stickers within the birth centres to promote the vaccine.

7. Process for Offering Vaccine

Women will be offered the influenza vaccination within the birth centres/hospital sites, GP clinics where these occur and at home.

Women can arrange to have the influenza vaccination at their routine appointment, an additional appointment or via a flu clinic when on offer.

Options other than a routine appointment may be relevant and encouraged when the woman may not be seen for a routine antenatal appointment for some time during flu season. Midwives can therefore arrange to see a woman from their caseload for a separate appointment for administration of the influenza vaccine.

Flu Clinics will also be offered to allow greater flexibility for women and to allow a larger number of women to be seen to obtain the vaccine early in the flu season.

Flu clinics will be planned in advance and appointments booked in by a midwife or maternity support worker (MSW).

Dates for flu clinics will be planned at the beginning of Autumn by each team.

Each team to arrange a specific flu clinic for a minimum of two weeks. For areas with larger caseloads, four or more may be needed. Following the start of the flu season when the majority of women have attended a clinic, the vaccine can be offered at routine appointments and bookings as they occur during the season. Flu vaccination should also be offered through DAU.

For midwives seeing women at home or in clinics in a GP surgery, 10 vaccines in an original box can be taken in a mini-Vaccine Porter® Carrier System. These are tested to be appropriate for 18 hours. Larger vaccine porters are available but are only suitable for storage up to 8hrs. Midwives taking vaccines to these clinics should return any unused ones following the clinic and only take the number that is deemed necessary for the clinic. These boxes must be marked to indicate that they have been transported in a vaccine porter (date and length of time). These must be placed at the front of the flu stock and, where necessary only be transported on one further occasion. If not administered on transportation on the second occasion, they must be discarded and reported as waste. Avoid waste wherever possible. Ensure they remain in the original box to protect from light etc.

PTHB staff will be able to approach midwives to receive their flu vaccine where this is possible.

8 Consent Procedure

Each woman will need a consent form completing (Appendix D).
The administering midwife must ensure the woman has also read the 'Flu facts for pregnant women' information sheet. The laminated one within the 'flu file' can be used and will be retained in the file for ease of access.
If the woman remains eligible to receive the vaccine she will need to sign the consent form.
If staff are receiving the vaccination the appropriate consent form through occupational health must be used.

9. Administration of Vaccination Procedure

Midwife to ensure there is adrenaline 1:1000, syringes and needles in the room where the vaccine is being administered.

Midwife to ensure they have access to call for help should this be required in the event of an adverse reaction. If the midwife is on their own in the birth centre they must ensure colleagues elsewhere in the hospital eg. MIU are aware that a flu clinic is happening in case they should need assistance.

Midwife to administer vaccine. The needle supplied in the box must be used according to manufacturer's specific instructions and disposed of in a yellow sharps bin. Vaccines supplied without needles will require administration with a blue safety needle

Midwife to complete the relevant information on the consent form following vaccination.

In the case of anaphylaxis, administer adrenaline in line with relevant PTHB policy.

Midwife to complete flu sticker on front of the woman's All Wales handheld records and the details within the record.

After administration of the vaccine the woman will be asked to wait in the waiting area for 10 minutes.

The woman will be provided with the Patient Information Leaflet for the specific vaccine given.

The woman should be provided with a comment card for completion where available.

On completion of administration of the influenza vaccine page 3 of the consent form must be sent to the GP within 5 working days.

It is the administering midwife's responsibility to ensure the GP is notified and the date this is sent is recorded on the consent form.

Should the flu vaccine be administered by the DAU team, the consent form must be sent to the named midwife to inform them of the administration of the vaccine. The DAU team will notify the GP.

During a flu clinic the forms can be collated to send to the relevant practice together.

The original consent form will be filed in the woman's tracer.

Where staff receive the vaccine the consent form must be returned to occupational health within 5 working days.

10 Monitoring compliance and Audit

10.1 Reporting via Welsh Patient Administration System (WPAS):

Recording of data via WPAS will support accurate records for women and enable access to data electronically for statistics, which also has the potential to be reported to Welsh Government and Public Health Wales if required.

All women will need to have recorded on WPAS whether they have:-

- Received the flu vaccine through Powys maternity services.
- Received the flu vaccine elsewhere (GP, Pharmacy, Occupational Health or another DGH).
- Declined to receive the vaccine.

If the woman receives the flu vaccine through Powys maternity services the administering midwife is to enter on to WPAS maternity view that the woman has received the vaccine:

Maternity view > current pregnancy > antenatal > complications > antenatal medication > date > select flu vaccination from the medication list.

If the woman declines the vaccine or receives it elsewhere, the named midwife will record this information on WPAS for women on their caseload.

In ALL cases where the woman has received the flu vaccine the date must be recorded as the date that the woman actually received it and not the date the information is added to WPAS (Appendix E).

Data to provide numerical information will be gathered from WPAS. This will collate numbers of vaccines given through Powys maternity services, number of vaccines received elsewhere and number of women who declined the vaccine.

10.2 Evaluation / Audit Framework

Completeness of data will be reviewed by the midwifery management team through data collated from the information team. Annual rates will also be contributed to through the annual point of delivery survey led by Public Health Wales.

11. Review and Change Control

This document will be reviewed every three years or earlier should audit results or changes to legislation / practice within PTHB indicate otherwise.

12. References / Bibliography

Green Book, Chapter 19: Influenza. [Green Book Chapter 19 Influenza \(publishing.service.gov.uk\)](https://www.publishing.service.gov.uk/government/uploads/system/uploads/attachment_data/file/424242/green-book-chapter-19-influenza.pdf)

PTHB/CDP007 Management of Anaphylaxis Procedure.
PTHB/MMP 010 Safe and secure management of refrigerated medicines and vaccines.

PTHB/MMP001 – Medicines Policy

PTHB/OHP002 Needlestick & Body Fluids Contamination Injuries Policy

Public Health Wales. - <https://phw.nhs.wales/topics/immunisation-and-vaccines/vaccine-resources-for-health-and-social-care-professionals/immunisation-training-resources-and-events/flu-immunisation-training/>

Appendix A

Flu Order Form

Influenza Vaccine ORDER FORM



Date order placed	
-------------------	--

Purpose for which the product is required:
 Delivery of PTHB Flu Vaccination Programme

Requested by:			
Name			
Designation		Contact No:	

Vaccine Name	Total Number of Doses	For Week Commencing:	
Fluad Tetra (a QIV)			
Flucelvax Tetra (QIV c)			
			Total No. of Doses

<u>Delivery Location</u> please also indicate whether for staff, inpatient or maternity vaccination	Number of doses	Date Required	Delivery Contact	Contact No.

*** Orders for delivery by transport will be dispatched at 7:45am. Orders for collection must be picked up between 7:45am - 9am**
To be completed by MMT

Date Received		Time Received	
Received by		Order details added to spreadsheet?	

Medicines Management Contact details:
 Address: Hafren Ward, Bronllys Hospital, Bronllys, Powys, LD3 0LU
 Telephone: 01874 712641
Email this order to: nikki.mathers@wales.nhs.uk please copy in emily.guerin@wales.nhs.uk & Info.MedicinesManagement.Powys@wales.nhs.uk

Appendix C

Letter for women



September

Dear

We would like to invite you to arrange to have a flu vaccination. The flu vaccine will protect both you and your baby and is safe to have at any stage of pregnancy.

The flu vaccine is recommended in pregnancy because pregnant women have a significantly increased risk of having complications if they get flu. For example, if you catch flu during pregnancy you are more likely to get severely ill from flu compared to women who aren't pregnant, at increased risk of admission to intensive care and at increased risk of miscarriage, or having a baby prematurely, or with a low birth weight. Catching flu can even lead to the baby being stillborn or dying in the first week of life.

The flu vaccine is safe and effective in pregnant women and provides protection for you and your unborn baby. It will also protect your baby for up to six months after he or she is born when flu can be very serious.

The side effects of the flu vaccine are mild compared to the disease itself. It does not contain live virus and cannot give you flu. The most common side effects are soreness and redness at the vaccination site and/or a slight temperature, headache and aching muscles which can last for a couple of days after having the vaccination.

To enable ease of access to the vaccine we are commencing a midwife-led service for women registered with your midwifery teams to receive the vaccine this year:

Please speak to your midwife or GP for more information.

Yours sincerely,

Midwife



GIG
CYMRU
NHS
WALES

Bwrdd Iechyd
Addysgu Powys
Powys Teaching
Health Board

Medi

Annwyl

Carem eich gwahodd i drefnu apwyntiad i gael brechiad ffliw. Bydd y brechiad rhag ffliw yn eich amddiffyn chi a'ch baban ac mae'n ddiogel ei gael unrhyw bryd yn ystod eich beichiogrwydd.

Argymhellwn eich bod yn cael eich brechu rhag y ffliw pan fyddwch yn feichiog oherwydd bod gan ferched beichiog risg uwch ddioddef yn sgil cymhlethdodau os ydynt yn dal y ffliw. Er enghraifft, os ydych yn dal y ffliw yn ystod eich beichiogrwydd rydych yn fwy tebygol o fynd yn ddifrifol wael o'r ffliw o'i gymharu â merched nad ydynt yn feichiog, bydd risg uwch o orfod cael gofal dwys a risg uwch o golli plentyn, neu roi genedigaeth i blentyn yn rhy gynnar neu blentyn â phwysau isel. Gall dal y ffliw hyd yn oed arwain at farw-enedigaeth neu faban yn marw yn ystod wythnos gyntaf ei fywyd.

Mae brechiad rhag y ffliw yn ddiogel ac yn effeithiol mewn merched beichiog ac mae'n darpa amddiffyniad i chi a'ch plentyn cyn ei eni. Bydd hefyd yn amddiffyn eich baban am hyd at chwe mis ar ôl iddo/iddi gael ei (g)eni. Gall y ffliw fod yn ddifrifol iawn yn y cyfnod yma.

Mae sgil effeithiau brechiad ffliw yn ysgafn o'u cymharu â'r clefyd ei hun. Nid yw'r brechiad yn cynnwys firws byw ac ni all roi'r ffliw i chi. Y sgil effeithiau mwyaf cyffredin yw dolur a chochni yn y man y cawsoch eich brechu, a/neu ychydig o wres, cur pen a chyhyrau poenus sy'n gallu para am ddiwrnod neu ddau ar ôl y brechiad.

Rydym bellach yn cynnig gwasanaeth brechu rhag ffliw sy'n cael ei arwain gan fydwragedd, sy'n golygu eich bod yn gallu cael eich brechiad ganddynt. Cysylltwch â'ch bydwaig ar 01874 622443 i drefnu apwyntiad neu i drafod y mater ymhellach.

Yr eiddoch yn gywir,

Bydwaig

Appendix D

Consent Form

Powys Teaching Health Board Maternity Services / Gwasanaethau
Mamolaeth Bwrdd Iechyd Addysgu Powys
Seasonal Influenza Vaccination Consent Form / Ffurflen Ganiatâd i
Frechiad Ffliw Tymhorol

PATIENT ID STICKER STICER RHIF ADNABOD Y CLAF	Midwifery Team / Tîm Bydwragedd		
	Named Midwife / Bydwraig Enwebedig		
	Woman's contact number / Rhif ffôn cyswllt y ferch		
	Woman's EDD / Dyddiad Geni Tebygol y ferch		
Have you received a flu vaccination in this flu season (1st September 2019 – 31st March 2020)? / A ydych wedi derbyn brechiad fflw yn ystod y tymor fflw hwn (1 Medi 2018 – 31 Mawrth 2019)?	Yes / Ydw	<input type="checkbox"/> (exclude/e ithrio)	No / Nac ydw <input type="checkbox"/>
Are you unwell today, e.g. do you have a temperature or infection etc? / A ydych yn sâl heddiw, e.e. a oes gennych dymheredd neu haint ac ati?	Yes / Oes	<input type="checkbox"/> (exclude temporary / eithrio dros dro)	No / Nac oes <input type="checkbox"/>
Have you had a severe anaphylaxis to egg that has previously required intensive care treatment? / A oes gennych anaffylaxis difrifol i wy sydd wedi gofyn am driniaeth flaenorol mewn gofal dwys?	Yes / Oes	<input type="checkbox"/> (exclude / eithrio)	No / Nac oes <input type="checkbox"/>
Have you had a confirmed anaphylactic reaction to a previous dose of the flu vaccine or any component of the vaccine previously? / A ydych wedi cael ymateb anaffylactig sydd wedi'i gadarnhau i ddos blaenorol o'r brechiad fflw neu unrhyw elfen o'r brechiad yn flaenorol?	Yes / Do	<input type="checkbox"/> (exclude / eithrio)	No / Naddo <input type="checkbox"/>
Do any of the other PGD exclusions apply? / A oes unrhyw eithriadau PGD eraill yn berthnasol?	Yes / Oes	<input type="checkbox"/> (exclude / eithrio)	No / Nac oes <input type="checkbox"/>

Declarations/ Datganiadau

Patient declaration: I have provided the midwife with information that is correct to the best of my knowledge. I have been fully informed of

the importance of influenza vaccination and the potential side effects of this vaccine. My signature below acknowledges my consent for the administration of the vaccine and for the details to be passed to my GP and for the maternity department to maintain this information on my record. I confirm I have read the 'Flu Facts for Pregnant Women' information sheet. / Datganiad y claf: Rwyf wedi darparu gwybodaeth sy'n gywir hyd eithaf fy ngwybodaeth i'r fydwraig. Rwyf wedi derbyn yr holl wybodaeth am bwysigrwydd y brechiad ffliw a sgil effeithiau posibl y brechiad hwn. Mae fy llofnod isod yn cydnabod fy mod yn rhoi caniatâd i weinyddu'r brechiad ac i drosglwyddo'r manylion i'm Meddyg Teulu a'r adran famolaeth i gynnal y wybodaeth hon ar fy nghofnodion. Rwy'n cadarnhau fy mod wedi darllen y daflen wybodaeth 'Ffeithiau Ffliw i Wragedd Beichiog'.

Patient Signature / Llofnod y Claf	
Patient Name / Enw'r Claf	
Date / Dyddiad	

For Maternity Services Use Only / At Ddefnydd y Gwasanaethau Mamolaeth yn Unig:

Is the patient eligible for flu vaccine? / A yw'r claf yn gymwys am frechiad ffliw?	Yes / Ydy <input type="checkbox"/> No / Nac ydy <input type="checkbox"/>
Does the patient wish to receive flu vaccine? / A yw'r claf yn dymuno derbyn y brechiad ffliw?	Yes / Ydy <input type="checkbox"/> No / Nac ydy <input type="checkbox"/>

Midwife Declaration: The action specified was based on the information given to me by the patient, which to the best of my knowledge, is correct. / **Datganiad y Fydwraig:** Mae'r weithred a ddynodir yn seiliedig ar y wybodaeth a gyflwynwyd i mi gan y claf, sydd hyd eithaf fy ngwybodaeth, yn gywi

Vaccination Date / Dyddiad y Brechiad		Time of vaccination / Amser y Brechiad	
Name of Midwife Administering Vaccine / Enw'r Fydwraig sy'n Gweinyddu'r Brechiad			
Name of Vaccine / Enw'r Brechiad		Batch Number / Rhif Cyfres	Expiry/ Dyddiad Dod i Ben
Site of Injection / Safle'r Brechiad	Sticker / Sticer:		

Tear off information to send to Patient's GP

Information for Patients' GP / Gwybodaeth i Feddyg Teulu'r Claf:

The following patient was administered the vaccine through maternity services. The vaccine was administered in line with the Powys Teaching Health Board's current patient group direction. To ensure that your records and the national data collection arrangements are complete, you are requested to record this using Read Code 65E20 – Seasonal Influenza Vaccination administered by another Healthcare Professional. / Gweinyddwyd y brechiad trwy'r gwasanaethau mamolaeth i'r claf canlynol. Gweinyddwyd y brechiad yn unol â chyfarwyddyd grŵp presennol Bwrdd Iechyd Addysgu Powys i gleifion. I sicrhau fod eich cofnodion a threfniadau casglu data cenedlaethol yn gyflawn, gofynnir i chi gofnodi hyn trwy ddefnyddio'r **Cod Darllen 56E20** - Brechiad Ffliw Tymhorol a weinyddwyd gan Weithiwr Gofal Iechyd Proffesiynol arall.

Vaccination Date / Dyddiad y Brechiad			
Patient ID sticker STICER RHIF ADNABOD Y CLAF			
Name of Vaccine / Enw'r Brechiad		Expiry / Dyddiad Dod i Ben	
Site of Injection / Safle'r Brechiad			

Appendix E

WPAS Details

Add an antenatal medication.

Medication Details

Date: 22/05/2018

Medication: Flu Vaccination

Drug:

Recorded By: Shelly Jones

Notes:

Buttons: Delete, OK, Cancel

Add an antenatal medication.

Medication Details

Date: 22/05/2018

Medication: Flu Vaccination - Declined

Drug:

Recorded By: Shelly Jones

Notes:

Buttons: Delete, OK, Cancel

Add an antenatal medication.

Medication Details

Date: 08/05/2018

Medication: Flu Vaccination - Elsewhere

Drug:

Recorded By: Shelly Jones

Notes:

Buttons: Delete, OK, Cancel

APPENDIX F

Influenza Vaccines for 2022-2023



**Mae Brechu yn
 achub bywydau**
**Vaccination
 saves lives**



GIG | Iechyd Cyhoeddus
CYMRU | Cymru
NHS | Public Health
WALES | Wales

2022/23 influenza season NHS Wales recommended flu vaccines

Age of eligible individual	aQIV	LAIV	QIVe	QIVc	QIVr	QIV-HD*
6 months to under 2 years of age	No	No	1 st	No	No	No
2-17 years of age	No	1 st	3 rd	2 nd	No	No
18-64 years of age	No	No	3 rd **	1 st	1 st	No
Aged 65 or over	1 st	No	No	3 rd	1 st	No

*Not reimbursable in NHS Wales

**Where QIVc or QIVr is not available

Key:

- aQIV Adjuvanted quadrivalent influenza vaccine
- LAIV Live attenuated influenza vaccine (quadrivalent)
- QIVc Quadrivalent cell culture influenza vaccine
- QIVr Quadrivalent recombinant influenza vaccine
- QIVe Quadrivalent influenza egg-culture vaccine
- QIV-HD High-dose quadrivalent inactivated influenza vaccine

aQIV (65+)

QIVc (18-64)



Adults 65 years of age and over and those who will become 65 before 31 March 2023

For vaccination of those aged 65 years and over in the 2022 to 2023 flu season, and those aged 64 years who will become 65 years old before 31 March 2023, JCVI advises the use of the following inactivated vaccines:

- adjuvanted quadrivalent influenza vaccine (aQIV)*
- quadrivalent recombinant influenza vaccine (QIVr)
- or, if aQIV and QIVr are not available, cell-based quadrivalent influenza vaccine (QIVc)

* aQIV may be offered 'off-label' to those who become 65 years of age before 31 March 2023.

PRE-ASSESSMENT CHECK:

USE CHECKLIST FOR FLU/COVID

- Check the AGE of the person first and confirm you have the recommended vaccine for the age of the staff member
- Ensure no allergies according to the PIL (specifically ask if they are allergic to egg)

EGG ALLERGY ALGORITHM

Vaccine Preventable Disease Programme (VPDP)

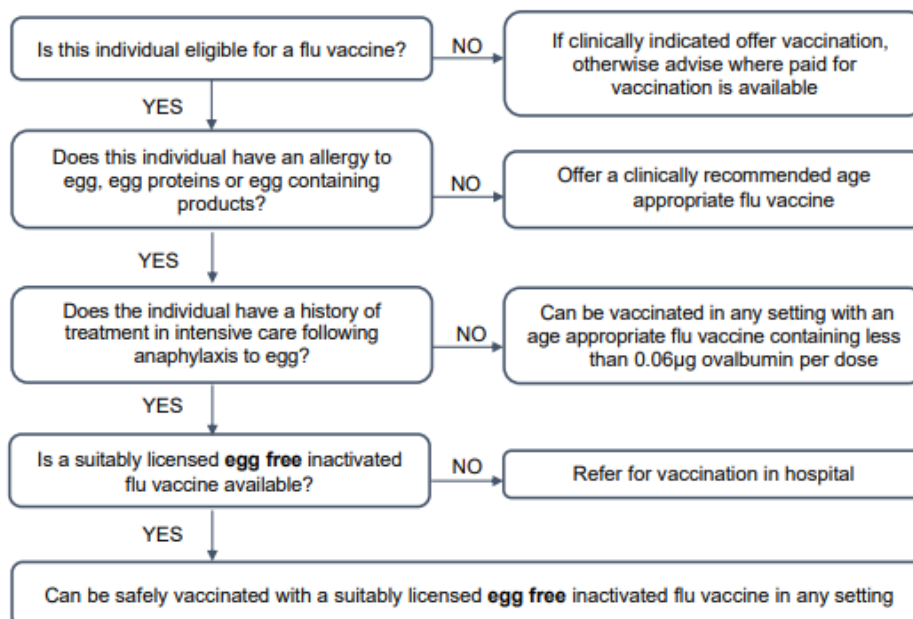
September 2022



Management chart for influenza (flu) vaccination in egg allergic individuals

Individuals with an allergy to egg or egg proteins may be at increased risk of adverse reaction to some flu vaccines. Inactivated flu vaccines that have no or a very low ovalbumin content (<0.12 µg/ml – equivalent to <0.06 µg for a 0.5ml dose) are available and studies show that they may be used safely in individuals with egg allergy ([Green Book chapter 19](#)).

This management chart may be a useful aid to clinical decision making.



Influenza vaccines for 2022/23 Ovalbumin content chart can be found here:

<https://www.gov.uk/government/publications/influenza-vaccines-marketed-in-the-uk>

Always check Summary of Product Characteristics (SPC) to ensure vaccine suitability on an individual patient basis. SPCs are available here: <https://www.medicines.org.uk/emc/>

The Green Book Chapter 19 – Influenza (updated September 2022) contains additional content on egg allergy and flu vaccine advice. Available at: <https://www.gov.uk/government/publications/influenza-the-green-book-chapter-19>

Welsh Government. The National Influenza Immunisation Programme:

[The national influenza immunisation programme 2022 to 2023 \(WHC/2022/010\) | GOV.WALES](#)

Joint Committee on Vaccination and Immunisation (JCVI) advice on influenza vaccines for the 2022/23 influenza season. Available at: [JCVI Statement on Influenza Vaccines 2022-23.pdf \(nitag-resource.org\)](#)

Material contained in this document may be reproduced without prior permission provided it is done so accurately and is not used in a misleading context. Acknowledgement to Public Health Wales NHS Trust to be stated.
© 2022 Public Health Wales NHS Trust.