



GIG  
CYMRU  
NHS  
WALES

Bwrdd Iechyd Prifysgol  
Bae Abertawe  
Swansea Bay University  
Health Board

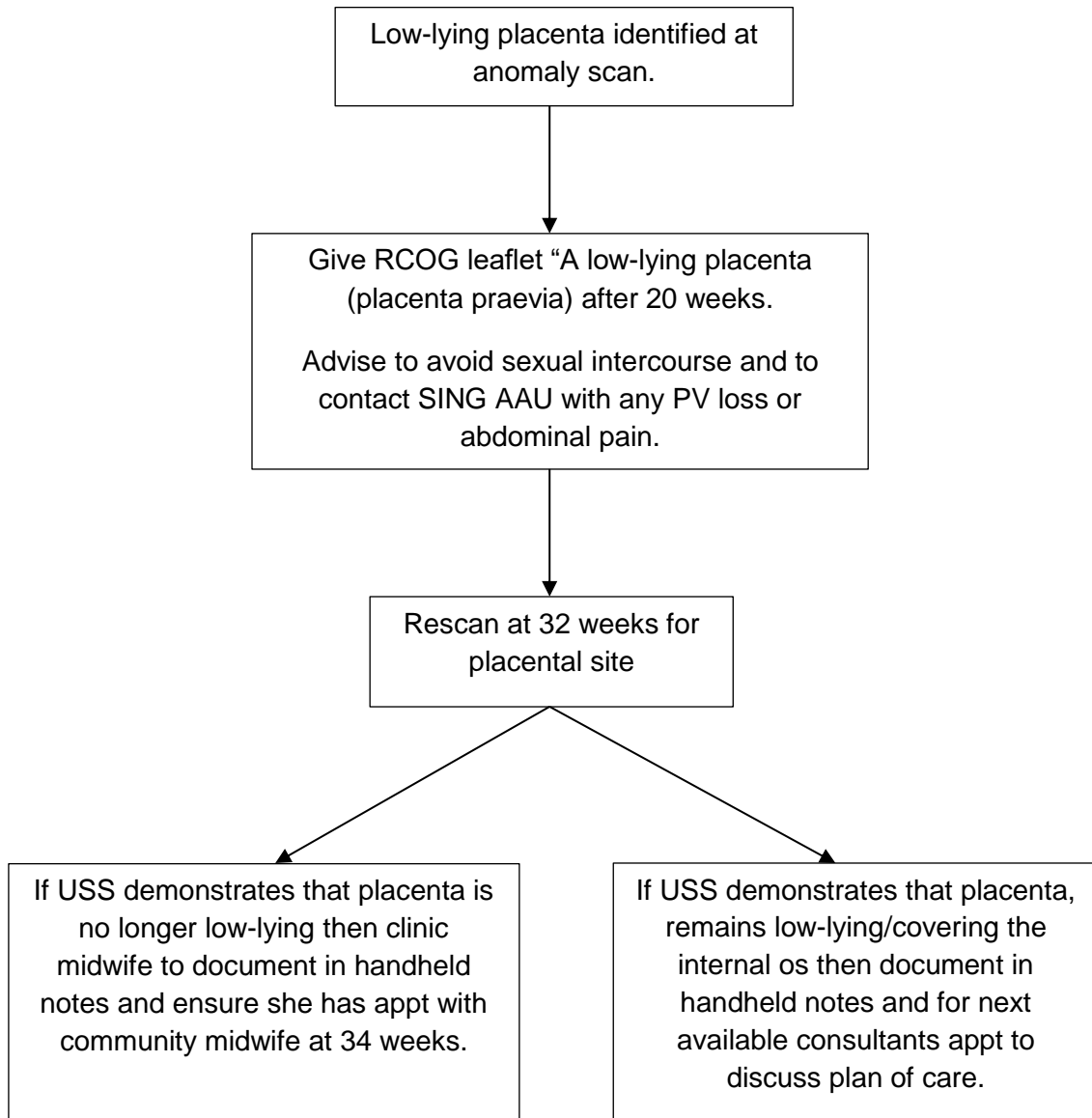
---

## **Pathway for Low-Lying Placenta at Anomaly Scan in Midwifery Led Care Women**

---

Speciality:            Maternity  
Approval body:       Antenatal Forum  
Approval date:       June 2022  
Date of Review:      June 2025

## Pathway for Low-Lying Placenta at Anomaly Scan in Midwifery Led Care Women



## Maternity Services

### Checklist for Clinical Guidelines being Submitted for Approval

Title of Guideline:	Pathway for Low-Lying Placenta at Anomaly Scan in Midwifery Led Care Women
Name(s) of Author:	Katie Donovan, Antenatal and Newborn Screening
Chair of Group or Committee approving submission:	Antenatal Forum
Brief outline giving reasons for document being submitted for ratification	To inform midwives of the pathway for MLC women with a low lying placenta at anomaly scan. To prevent unnecessary consultant appointments.
Details of persons included in consultation process:	Antenatal forum members Superintendent sonographers
Name of Pharmacist (mandatory if drugs involved):	N/A
Issue / Version No:	2
Please list any policies/guidelines this document will supercede:	N/A
Date approved by Group:	June 2022
Next Review / Guideline Expiry:	June 2025
Please indicate key words you wish to be linked to document	Low lying placenta
File Name: Used to locate where file is stores on hard drive	